



SNJB's KKHA Arts, SMGL Commerce & SPHJ Science College, Chandwad

Report of Analysis of Feedback on Curriculum Collected From Different Stakeholders

Academic Year 2015-16

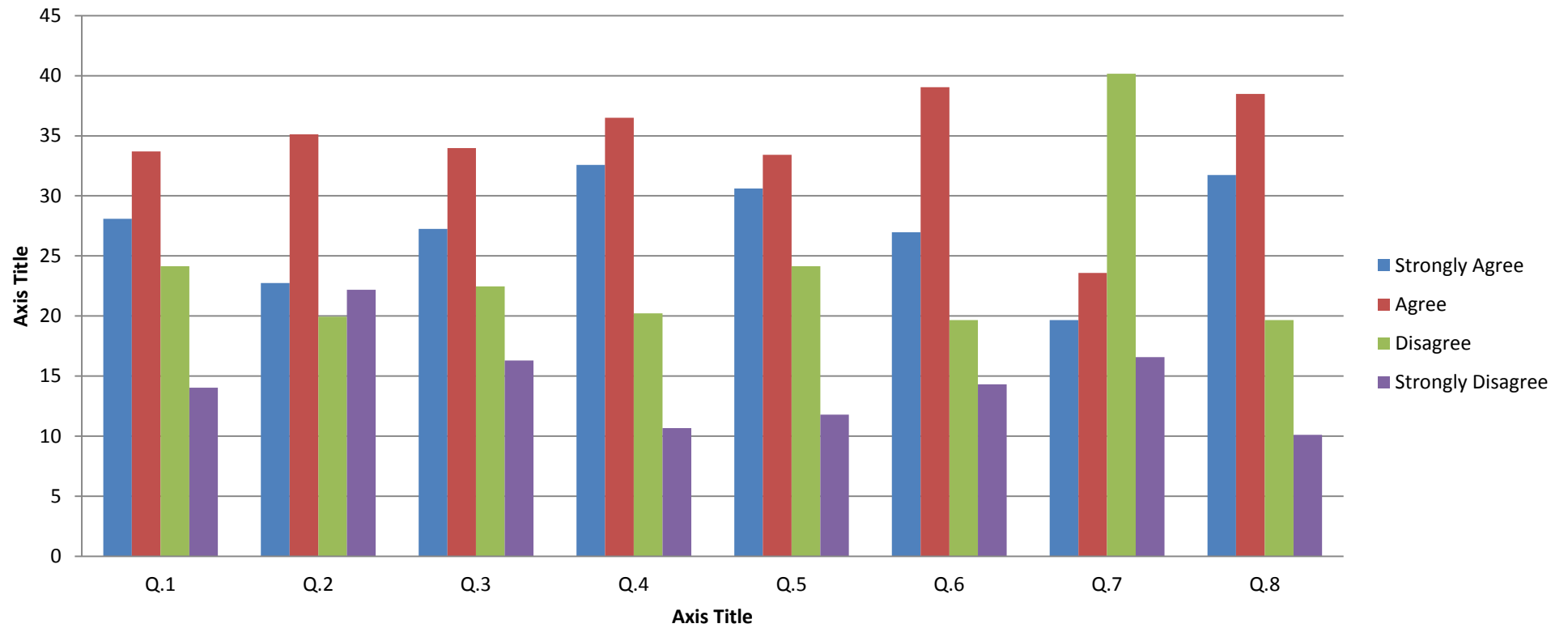
The Feedback Process has put an emphasis on the need for involvement of students in the quality assurance of higher education. Student involvement requires that students should act as collaborators in, rather than merely passive receivers of, teaching and learning process. All the stakeholders' feedback data was collected and analyzed as per the following tables the academic year 2015-16

Student's feedback about curriculum

Total number of response:-356

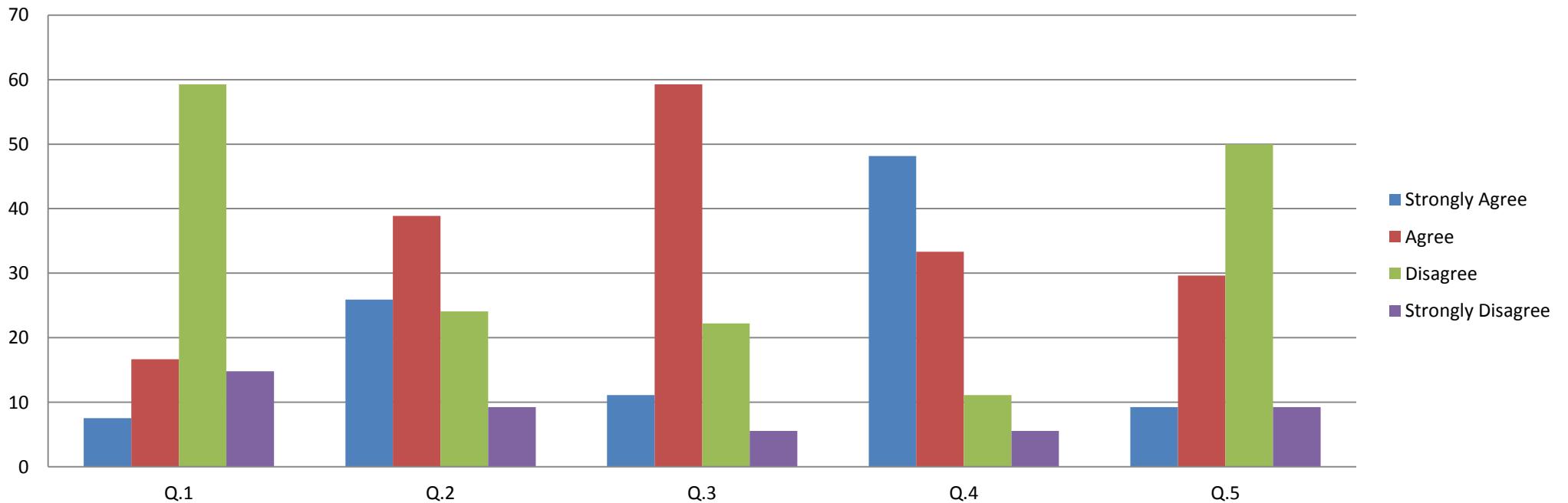
Q.No.	Curriculum Evaluation Points	Response			
1	Depth of syllabus content	28.08%(Very High)	33.70% (high)	24.15% (understandable)	14.04% (difficult)
2	Whether syllabus is career oriented	22.75% (To a great extent)	35.11% (To a considerable extent)	19.94% (To a moderate extent)	22.19% (Oriented unsatisfactory)
3	Does the syllabus generate interest?	27.24%(To a great extent)	33.98%(To a considerable extent)	22.47% (To a moderate extent)	16.29%(Oriented unsatisfactory)
4	How do you rate the sequence of units in the syllabus?	32.58% (Logical)	36.51% (Sometimes Logical)	20.22% (Somewhat disconnected)	10.67%(illogical)
5	Rate the size of syllabus in terms of load on the student?	30.61% (Too large)	33.42%(large)	24.15%(bearable)	11.79 % (difficult to bear)
6	How do you rate the objectives stated and relevance to the course content?	26.96% (Absolutely relevant)	39.04 % (relevant)	19.66% (sometimes relevant)	14.32% (not relevant)
7	The internal evaluation system as it exists regarding syllabus is?	19.66% (Perfect)	23.59% (satisfactory)	40.16% (sometimes Satisfactory)	16.57% (unsatisfactory)
8	What is your opinion about library holdings books for the syllabus of your course?	31.74% (fully adequate)	38.48% (adequate)	19.66% (sometimes adequate)	10.11% (not adequate)
9	Any Suggestions	IN Syllabus add the maximum Topics Of NET SET exams, Very good syllabus, Syllabus easily understand ,Update syllabus, Semester pattern for FY, All topic in the syllabus will make interesting to understand.			

Student's feedback about curriculum Academic Year 2015-16

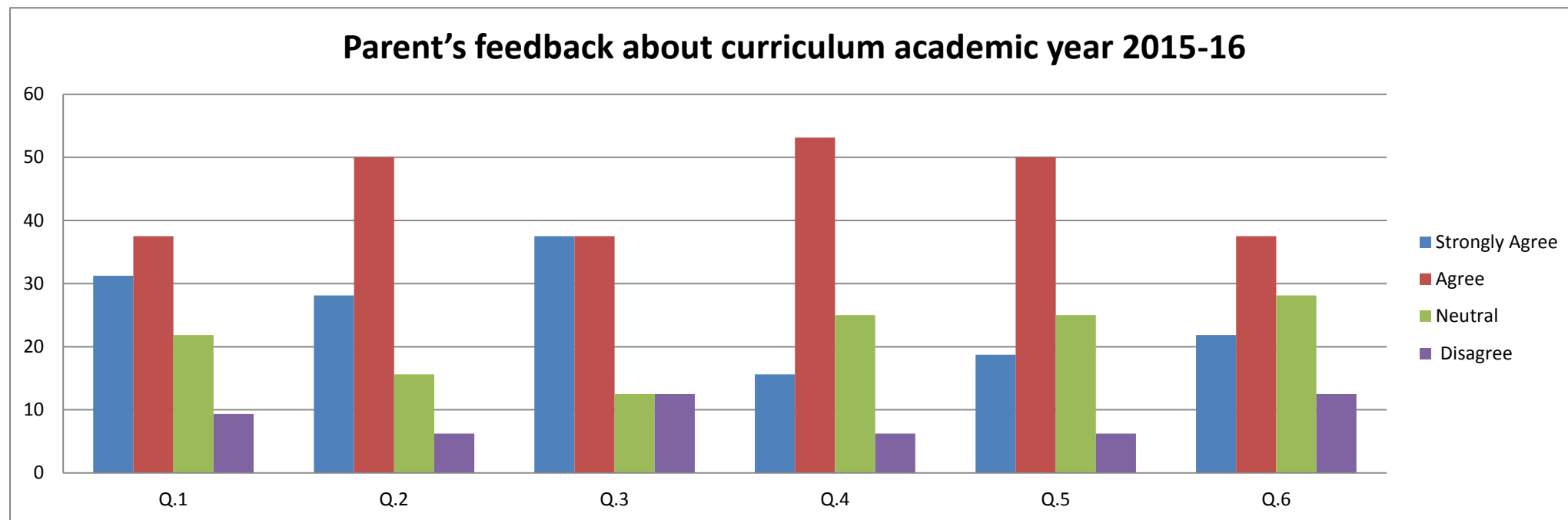


Question No.	Curriculum Evaluation Points	Response in %			
1	Depth of syllabus content	7.54% (Very High)	16.66% (high)	59.25% (understandable)	14.81% (difficult)
2	Whether syllabus is career oriented	25.92% (To a great extent)	38.88% To a considerable extent	24.07% To a moderate extent	9.25% Oriented unsatisfactory
3	Does the syllabus generate interest?	11.11% (To a great extent)	59.25% (To a considerable extent)	22.22% To a moderate extent	5.55% Oriented unsatisfactory
4	Rate the size of syllabus in terms of load on the student?	48.14% Too large	33.33% large	11.11% Somewhat bearable	5.55% difficult to bear
5	The internal evaluation system as it exists regarding syllabus is?	9.25% Perfect	29.62% satisfactory	50% Sometimes Satisfactory	9.25% unsatisfactory

Alumni feedback about curriculum academic year 2015-16



Question No.	Curriculum Evaluation Points	Response in %			
		Strongly Agree	Agree	Disagree	Strongly Disagree
1	Are you satisfied with the facilities in the college?	31.25%	37.5%	21.87%	9.37%
2	Do you communicate with your ward about their progress?	28.12%	31.25%	15.62%	6.25%
3	Has the college education contributed to the personality development of your ward?	37.5%	40.62%	12.5%	9.37%
4	Is the college education profession oriented?	15.62%	53.12%	25%	6.25%
5	Are you satisfied with the teaching methods?	18.75%	50%	25%	6.25%
6	Are you satisfied with the academic development of your ward?	21.87%	37.5%	28.12%	12.5%



Q. No.	Curriculum Evaluation Points	Response			
		Strongly agree	Agree	Neutral	Disagree
1	The learning objectives are clear and appropriate to needs of student	30.61%	32.65%	22.44%	14.28%
2	Are you satisfied with the existing curriculum/syllabus with respect to time management, planning & execution?	36.73%	36.73%	18.36%	8.16%
3	Is the syllabus designed according to students' understanding power?	28.57%	36.76%	24.48%	10.20%
4	The courses / syllabi taught has a good balance between theory and application	28.57%	42.85%	20.40%	8.16%
5	The books/journals etc. prescribed / listed as reference materials are relevant, updated and cover the entire syllabi	30.61%	44.89%	18.36%	6.12%
6	The courses / syllabi of the subjects taught have increased my interest, knowledge and perspective in the subject area	40.81%	30.61%	18.36%	10.20%
7	Tests and examinations are conducted well in time with proper coverage of all units in the syllabus	46.93%	28.57%	16.32%	8.16%
8	Does the current syllabus provides students internship or field projects ?	30.61%	28.57%	28.57%	12.24%
9	Course content is followed by corresponding reference materials	28.57%	36.73%	26.53%	8.16%
10	The prescribed books are available in the Library in sufficient numbers	36.73%	32.65%	26.53%	4.08%

Teacher's feedback about curriculum academic year 2015-16

